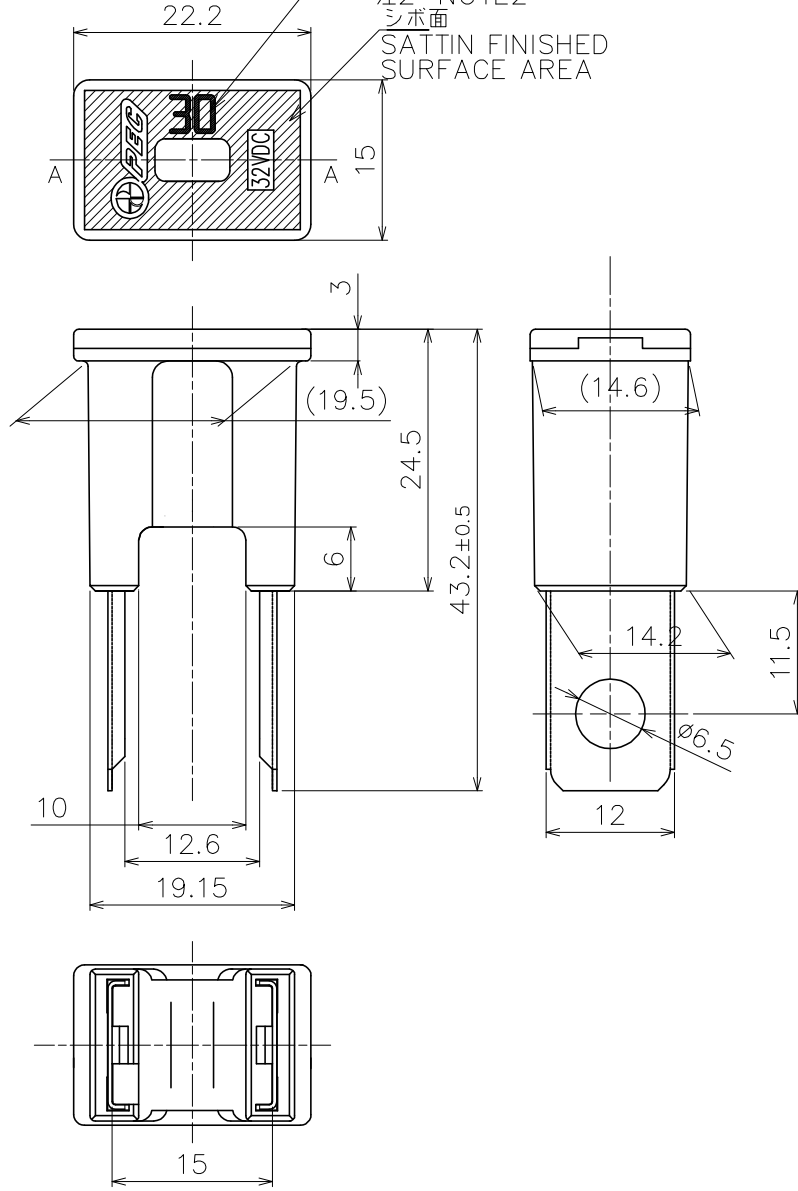


NO.	DATE	REVISION RECORDS	REVISED	REVISION NO.
△	27/JUL/2017	ERROR COLECTION,WRITTEN IN BOTH JAPANESE AND ENGLISH..	KOBAYASHI	PES-168-165

△注3 NOTE3
 定格表示：ホットスタンプ(白)
 RATED CURRENT:HOT STAMPING(WHITE)

注2 NOTE2
 シボ面
 SATIN FINISHED
 SURFACE AREA



△注記
 1.本図は SBFC-BT 30Aを示し、他の定格は容量表示とハウジング色が異なる。
 2.シボはR終わりまでとする。
 3.定格表示の位置は、図面指示部または カバーを180°回転させた図面指示部とする。
 4.太平洋精工規定(PES-02-04)の環境負荷物質の使用禁止、制限規定を遵守のこと。

NOTES
 1.THIS SHOWS SBFC-BT 30A,ANOTHER IS DIFFERENT IN HOUSING COLOR AND INDICATION OF COVER.
 2.SATTIN FINISHED SURFACE AREA SHALL END WITHIN THE EDGE OF R.
 3.AMPERE RATING SHALL BE MARKED EITHER ON THE INDICATED POSITION IN THIS DRAWING OR THE SAME POSITION WHEN THE COVER IS REVOLVED BY 180°
 4.COMPLY WITH ENVIRONMENTAL RESTRICTION AND PROHIBITION WHICH PRESCRIBED UNDER "PES-02-04"


定格 CURRENT RATING	ハウジング色 HOUSING COLOR CODE	太平洋品番 PACIFIC PART NUMBER	包装品番 PACKAGING PART NUMBER
30A	PINK	31360000	31360001
40A	GREEN	31460000	31460001
50A	RED	31560000	31560001
60A	YELLOW	31660000	31660001
70A	BROWN	31760000	31760001
80A	BLACK	31860000	31860001
100A	BLUE	32060000	32060001
120A	WHITE	32260000	32260001
140A	REDDISH BROWN	32460000	32460001

3	—	ELEMENT	1	Cu Alloy	—	—
2	—	COVER	1	P A R	—	—
1	—	HOUSING	1	PA66: ≤60A,PA6T≥70A	—	—
NO.	PART NO.	PART NAME	Q'TY	MATERIAL	SIZE	REMARKS
APPROVED	<i>mmg-ta</i>	DIMENSION TOLERANCE		ANGULAR TOLERANCE		FINISH
CHECKED	<i>mla</i>	±0.2		-		-
DESIGNED	<i>T. Kobayashi</i>	RUST PREVENTION		MATERIAL		
DRAWN	<i>T. Kobayashi</i>	-		SEE TABLE		
SCALE	2:1	UNIT	mm	DIAGRAM METHOD	PART NAME	
				THIRD ANGLE PROJECTION	SBFC-BT	
DRAWING DATE	27/JUL/2017	DRAWING NAME	G3136-0-4	3D CAD DATA	PART NO.	
					SEE TABLE	
Pacific Engineering Corporation					SHEET	SIZE
					1 / 2	A3

NO.	DATE	REVISION RECORDS	REVISED	REVISION NO.
		REFER TO (1/2)		

PACKAGING SPECIFICATION

包装仕様書

PACKAGING INFORMATION 包装内容		INNER PACKAGING 内装	OUTER PACKAGING 外装
	MATERIAL 包装材	—	CARDBOARD BOX (390×260×121) ダンボール箱
	SEAL OF PART No. 品番シール	—	ID TAG 現品票
	MARKING 表示	<EXAMPLE> <例>	<EXAMPLE> <例> 
	CAPACITY 収容数	—	500pcs
METHOD 方法	<p>1.Pack the specified quantity of fuses into the cardboard box .</p> <p>2.Seal the cardboard box with PP Tape and put the ID tag on the side of the box (Prescribed place).</p> <p>1. ダンボールに 製品を規定の収容数 バラ詰めする。</p> <p>2.ダンボールのフタをPPテープで止め、ダンボール側面(現品票貼り付け位置)に現品票を貼る。</p>		

NO.	PART NO.	PART NAME	Q'TY	MATERIAL	SIZE	REMARKS	
APPROVED	<i>me</i>	DIMENSION TOLERANCE	ANGULAR TOLERANCE	FINISH			
CHECKED	<i>me</i>	REFER TO 1/2	-	-			
DESIGNED	<i>T. Kobayashi</i>	RUST PREVENTION	MATERIAL				
DRAWN	<i>T. Kobayashi</i>	-	REFER TO 1/2				
SCALE	UNIT	DIAGRAM METHOD	PART NAME				
2:1	mm	THIRD ANGLE PROJECTION	SBFC-BT				
DRAWING DATE	DRAWING NAME	3D CAD DATA	PART NO.				
27/JUL/2017	G3136-0-4	-	REFER TO 1/2				
Pacific Engineering Corporation						SHEET	SIZE
						2 / 2	A3